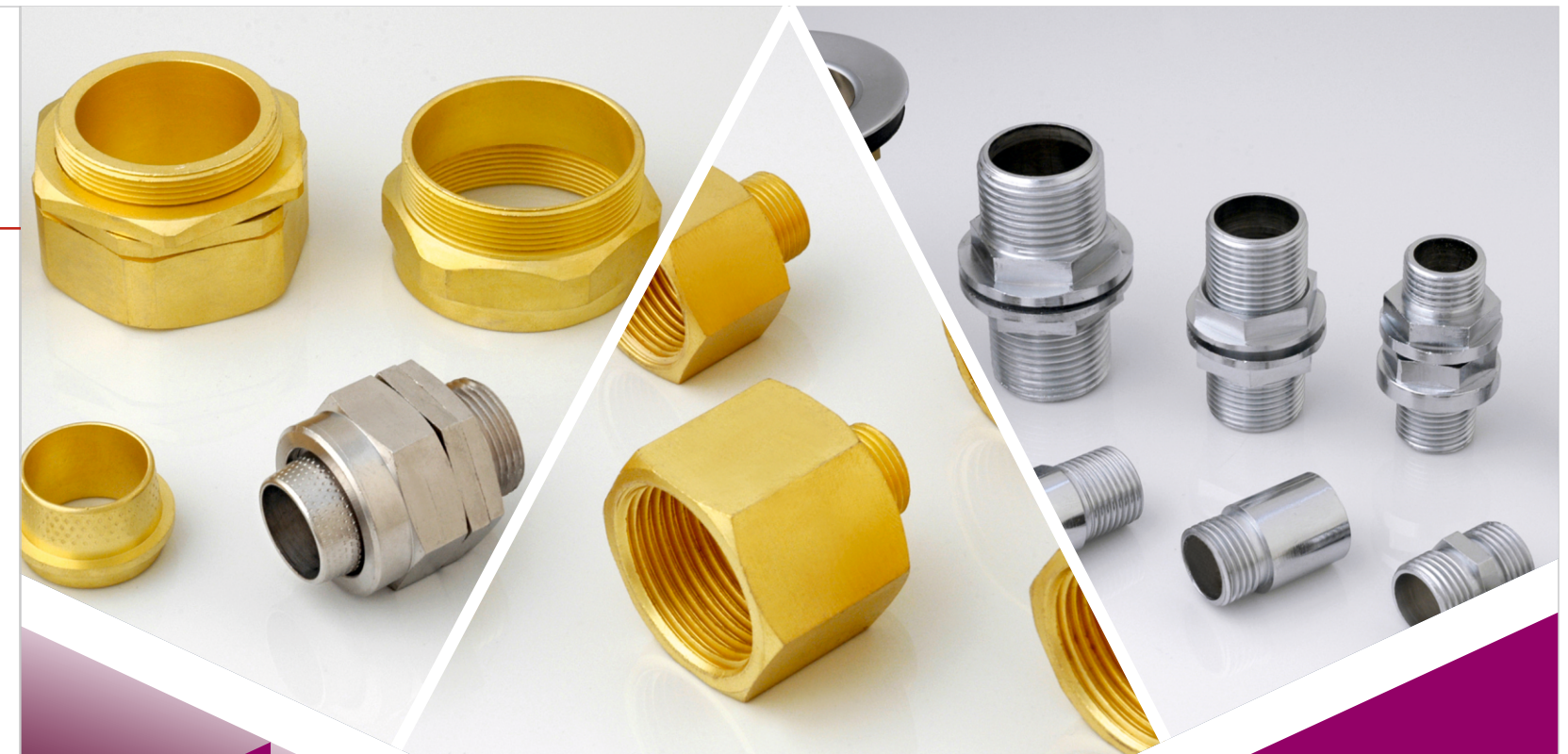


CNC TURNED AND MILLED PARTS



BRASS CPVC FITTINGS

BRASS PPR FITTINGS

BRASS UPVC FITTINGS

BRASS ADAPTOR

PRECISION BRASS COMPONENTS



An ISO 9001:2015 Company



R. V. INDUSTRIES

Manufacturer of



Brass Components

CPVC FITTING



Male-Female CPVC Fittings



CPVC Male Adaptor

Brass Male / Female Inserts for CPVC Fittings

Fitted with Stainless Steel Ferrule & EPDM Rubber Ring

Available : Cross Knurling & Straight Knurling
Sizes : 1/2", 3/4", 1", 1 1/4", 1 1/2", 2", 2 1/2", 3", 4".
Threads : BSP & BSPT (Parallel & Taper Threads)
 Customized Design & Precision Acceptable

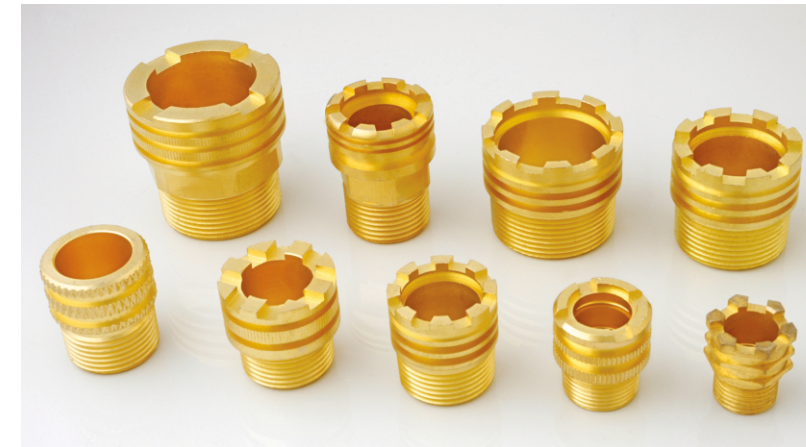
Brass Male Insert / Adaptor for CPVC Fittings

Available : Hex / Flower & Round Head
Sizes : 1/2", 3/4", 1", 1 1/4", 1 1/2", 2", 2 1/2", 3", 4".
Threads : BSP & BSPT (Parallel & Taper Threads)
 Customized Design & Precision Acceptable



Brass Union Joints with Plating & without Plating. Round & Hex. Mostly Used in Joining Pipes in PPR Industries.

PPR FITTING



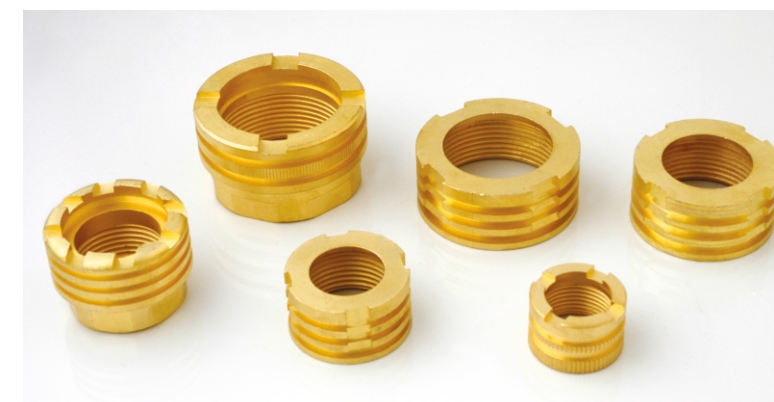
◀ Brass Male Inserts for PPR Fittings

Brass Male Inserts for PPR Fittings

Available : Brass / Nickle & Chrome Finish
Sizes : 1/2", 3/4", 1", 1 1/4", 1 1/2", 2", 2 1/2", 3", 4".
Threads : BSP & BSPT (Parallel & Taper Threads)
 Customized Design & Precision Acceptable



Brass Male & Female Inserts for PPR Fittings ▶
 (Chrome Finish)



◀ Brass Female Inserts for PPR Fittings

Brass Female Inserts for PPR Fittings

Available : Brass / Nickle & Chrome Finish
Sizes : 1/2", 3/4", 1", 1 1/4", 1 1/2", 2", 2 1/2", 3", 4".
Threads : BSP & BSPT (Parallel & Taper Threads)
 Customized Design & Precision Acceptable